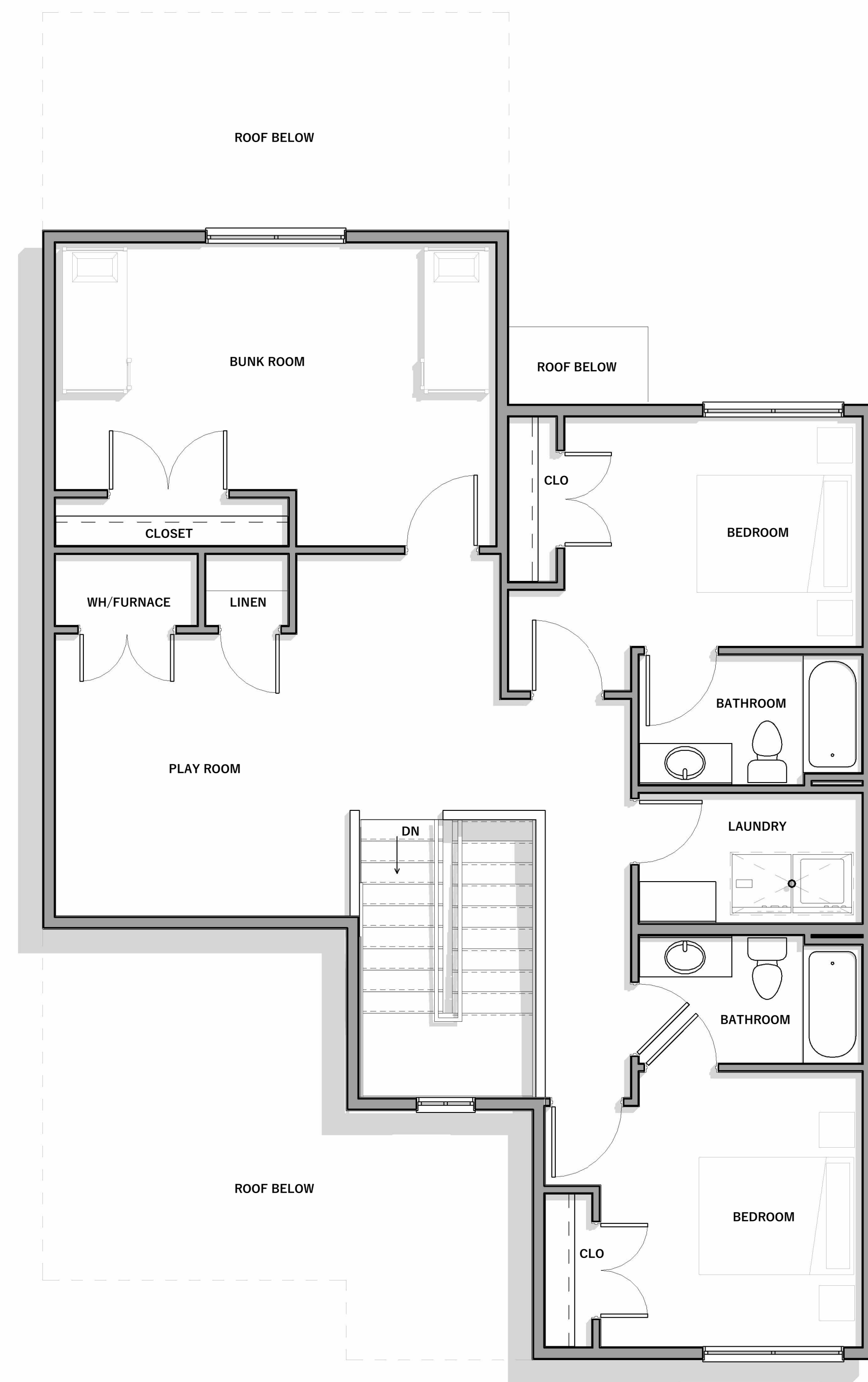


1  
PR004

**3 BEDROOM UNIT - LEVEL 1**

1/4" = 1'-0"



2  
PR004

**3 BEDROOM UNIT - LEVEL 2**

1/4" = 1'-0"

**UNIT AREA**

**LEVEL 1**  
GARAGE: 450 SF  
LIVING SPACE: 1,184 SF

**LEVEL 2**  
LIVING SPACE: 1,081 SF

**TOWNHOUSE TOTAL: 2,265 SF**  
(MINUS GARAGE)